

Houses planned for Sawtry

Larkfleet Homes is launching a public consultation on proposals for a development of approximately 350 new homes on land off Glatton Road, Sawtry.

The proposed development would include a mixture of one and two-storey properties ranging from one to four-bedroom homes and a number of bungalows. The homes would be designed to meet the needs of a range of people from first-time buyers to families. Some of the homes would be 'affordable' to assist those struggling to get onto the 'property ladder'.

The proposal also includes space for new community facilities as well as areas of public open space, including play areas for children.

Larkfleet held a public exhibition of the proposals on Monday 19 March 2018 at Sawtry Village Academy Library, Fen Lane, Sawtry, PE28 5TH.

A letter was distributed to nearby residents providing information about the proposals, along with details of the exhibition.

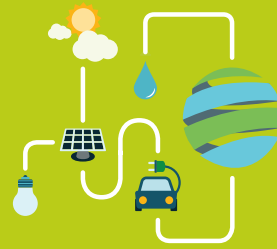
Members of the development project team were on hand at the exhibition to answer questions about the proposals. Feedback forms were also available to allow people to leave their comments and ideas.

David Morris, senior land manager at Larkfleet Homes, said: "The new development in Sawtry would provide much-needed housing and space for new community facilities which will benefit new and existing residents.

"We are keen to work with the local community to try and help address existing issues such as constrained community facilities and provisions for the young community in Sawtry village. The opportunity for input from the local community is an important part of the planning process and we encouraged people to attend the public exhibition where they could ask questions and provide us with their feedback."

The proposed plans are also available to view online www.larkfleetplanning.co.uk/sawtry





Why buying new is a no brainer

Moving or relocating? Buying a new-build home is a no brainer.



According to the Homebuilders' Federation, over 90 per cent of new homebuyers said that they would buy a new build home again. More than 86 per cent said they would recommend their home builder to a friend - a two per cent year-on-year increase.

Customer satisfaction levels for new homes compare favourably with any other industry or product and help explain why demand for new homes continues to increase.

As part of our commitment to improving quality even further we are undertaking our own customer satisfaction survey.

But why buy new in the first place?

A new Larkfleet home is fresh, bright, clean and untouched by previous owners' choice of décor. It is a blank canvas on which you and your family can stamp your own style and personality. New homes are also much more energy efficient than older homes. This means they are better for the environment but can also save their owners hundreds of pounds a year in energy bills.

There are lots of ways to buy a new home! Sometimes, buying a house can seem like an impossible dream. But people looking to buy

new have a range of options, such as Help to Buy or part exchange schemes. These can help make the goal of homeownership more affordable and completely achievable.

You can be sure that you will get a high build quality. New homes are built to a higher standard than ever before. From state-of-the-art kitchens to modern double and triple glazing, the quality of a new home compared to old is evident in many ways.

New homes are designed for modern living. They incorporate a range of modern designs and technologies to provide for the needs of today's home owner. To upgrade an older house to the standards of a new build home could cost up to £45,000.

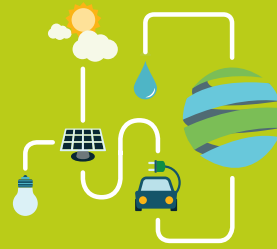
New homes are also more economical to manage. New homes built in the UK are roughly 50 per cent cheaper to run per year than the equivalent Victorian house. That could mean an annual saving of £440 for a 1-bed ground floor flat, and £1,410 for a 4-bed detached house.

By buying a new home you will be doing your bit for the environment. New homes are environmentally friendly. Energy efficiency

standards and CO₂ emissions in new homes are some of the best in the world. On average, this equates to them being roughly 65 per cent more energy efficient than an equivalent Victorian house.

Lastly, the peace of mind you get with a new home is more than just knowing you're buying quality and getting excellent value for money. It's also about being confident in the product you're buying and knowing that you're protected should anything happen. New homebuyers are protected by their builder's guarantee as well as an independent 10-year warranty. Customers also benefit from the peace of mind given by Consumer Codes.





Help shape the future of housebuilding – and net yourself £1,000!

We have launched a survey to get the thoughts and experiences of house buyers. We are keen to hear from anyone currently searching for a new house or who has purchased a new house in the past twelve months.

Complete our survey and we will enter you into our prize draw for a chance to win £500. Agree to a follow up interview and you will be entered in a second draw to win a further £500.

Go to www.tiny.cc/larkfleet-survey to take part in the survey.

The Larkfleet Homes team is always working to develop new ways to provide the best possible products and services to our customers. We want to know what house buyers really think of the housing market and what they want from housebuilders like us.

Whether your recent house search and purchase involved a brand-new home or an established property, and whether you looked at a Larkfleet home or not, your views will help to shape the way we meet the needs of home buyers in the future.



We have teamed up with leading media organisations First Time Buyer Magazine, What House and What Mortgage to develop and deliver this comprehensive survey to find out what you, our customer, is really looking for in a new home.

The survey covers everything from the type of property people are looking to buy or have bought (whether it's for their own use or an investment) through to topics such as location, size and energy efficiency.

It takes less than ten minutes to complete at www.tiny.cc/larkfleet-survey. The survey is being managed by independent marketing company OlsenMetrix Marketing and all the data collected will be anonymous.

Larkfleet community support

The Larkfleet Homes Community Fund supports charitable projects that enhance or develop a local community. The fund is part of our commitment to supporting the existing communities within which we are developing new homes and to helping the integration of our new developments within those communities.

Any charitable cause or community project that operates within ten miles (16 kilometres) of any Larkfleet Homes or Allison Homes development can apply for these grants. There is no restriction on the number of grants that can be given to a particular place but we will aim to ensure that the fund, over time, supports communities right across our area of operations. We will not offer grants to the same organisation more than once every three years.

Grants of between £250 and £5,000 (or more in special circumstances) are awarded on a quarterly basis with 'cut off' dates for submission on 1 February, 1 May, 1 August and 1 November each year.

These grants from the Larkfleet Homes Community Fund are administered by the Cambridgeshire Community Foundation and full details are on its website.

Small grants

Sponsorships, gifts and grants of less than £250 are administered directly by Larkfleet Homes.

We recognise that many small groups, seeking small donations, may not be able to meet all the requirements of the Cambridgeshire Community Foundation's application process.

The same criteria are used in assessing applications for small grants as are used for the larger grants administered by the Cambridgeshire Community Foundation. We are aiming to support charitable causes or community projects operating within ten miles (16 kilometres) of any Larkfleet Homes or Allison Homes development. Our focus is on activities that enhance or develop local communities.

The Larkfleet Community Fund history

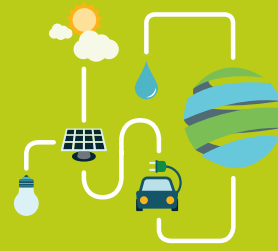
The Larkfleet Homes Community Fund has been operating since 2016 and has already given away tens of thousands of pounds to local communities including:

- **Giving £4,000 to Cottesmore Millfied Academy in Oakham**, where some of the money has been used to purchase benches for the children to enjoy in the school gardens.
- **Contributing £5,000** towards the cost of a new swimming pool at **Eye Primary School** which will be used by pupils and the local community.

- Supporting **The Creech Party in the Park**, which is a true community event with arts, crafts, activities, displays, refreshments, games and music, held in South West England.
- **Sponsoring the Open Maiden race at Cottesmore Point-to-Point** event held at Garthorpe that is run entirely by volunteers.
- **Donating £500 to the RAF Association in Peterborough.**
- **Providing shirts** for the choir at **Bourne Elsea Park Primary Academy.**

To find out more about the fund and apply for a grant go to: www.larkfleethomes.co.uk/community-fund





New homes planned



Going to the show

Lincolnshire Media's first Residential Property Show has been devised to showcase the county's booming residential property sector.

This event is aimed at anyone looking to buy, sell, move, rent, improve or renovate. It's a free-to-attend exhibition, with stands ranging from estate agents, kitchen and bathroom suppliers, furniture and homeware retailers, interior designers, financial advisors, utility companies and solicitors, plus a series of seminars throughout the day. The Home Show is open from 10am - 4pm.

For more information

Please contact Laura Bateson
on 01522 804328

or laura.bateson@lincolnshiremedia.co.uk.

Visit lincolnshirelive.co.uk/homeshow

#LincsHomeShow

Plans for homes in Bury, near Ramsey

Larkfleet Homes is launching a public consultation on proposals for a development of up to 100 new homes on land off Upwood Road in Bury, close to the town of Ramsey in Cambridgeshire.

The proposed development would include a mix of houses for first-time buyers, families that are looking to upsize and the elderly. Some of the homes would be 'affordable' to assist those struggling to secure a home of their own. The proposals also include an area of public open space with a children's play area and additional landscaping.

Larkfleet held a public exhibition of the proposals on Wednesday 18 April 2018 at Bury Village Hall, Brookfield Way, Bury PE26 2LH.

A letter was distributed to local residents providing information about the proposals, along with details of the exhibition.

Members of the development project team were on hand at the exhibition to answer questions about the proposals. Visitors were able to complete a feedback form with their comments.

David Morris, senior land manager at Larkfleet Homes, said: "The new development in Bury would provide much-needed housing in a sustainable location. We were keen to consult with local residents on these proposals and encouraged people to attend the public exhibition on 18 April where they could ask questions and provide us with their feedback."

The proposed plans are also available to view online at www.larkfleetplanning.co.uk/bury.

People can also call 0800 975 5852 if they have any queries or e-mail consultation@athene-communications.co.uk.

