

New show home at Boston Gate

The brand-new Waltham show home at Allison Homes' Boston Gate development in Sibsey Road, Boston, is now open.

Customers who reserved a home at Boston Gate over the May Bank holiday weekend received a £5,000 voucher towards personalising their new home.

Boston Gate is a development of traditionally-built homes located in the historic Lincolnshire town of Boston. There are 16 different styles of home to choose from, meeting the needs of homebuyers ranging from those setting foot on the property ladder for the first time through to those seeking a larger home for a growing family. A range of 3, 4 and 5-bedroom homes is available from £194,995.

The new show home is a 'Waltham' style 5-bedroom detached house.

With a blend of urban and rural living unique to small towns, Boston offers good shopping and schools alongside a wide variety of activities, including museums, nature reserves, entertainment and sports right on the doorstep. It is therefore a popular choice for families to set up home.

The A17 and A52 give Boston easy access to surrounding towns, cities and coastal routes. There are rail services to Nottingham (via Sleaford), the seaside resort of Skegness and, via Grantham on the East Coast main line, to London, the north of England and Scotland.



New sales centre in South West

Larkfleet Homes South West has opened a new sales centre at Willow Heights, a development of 65 stylish 3 and 4-bedroom detached and semi-detached houses and 2 and 3-bedroom bungalows in the village of Witheridge.

The new on-site sales centre is now open from 10:00 to 17:00, Thursday to Monday.

Willow Heights is located within the small picturesque Devon village of Witheridge, right in the heart of Devon amidst un-spoilt countryside. The village is set on rolling hills with Exmoor National Park to the north and

Dartmoor National Park a short distance away to the south. A short drive will take you to the beautiful Tarka Trail at Eggesford.

Head north, and you are soon at North Devon's principal town of Barnstaple, or on the rugged Atlantic coastline. The bustling historic county city of Exeter is just a short distance to the south.

The village has its own primary school (rated 'good' by OFSTED), a post office, a shop and doctors' surgery/medical centre. There is also a village pub, a church and a variety of social clubs.

Witheridge is approximately 11 miles from the thriving market towns of South Molton and Tiverton which both provide excellent amenities including schools, banking and shopping.

Approximately 6 miles from Tiverton is junction 27 of the M5 and Tiverton Parkway Station provides direct access to the national rail network.

Call the new sales centre now for more information on 07540 735304.

LarkfleetHomes
— South West —



New Homes Week

Larkfleet Homes backed New Homes Week, an initiative run by the Home Builders Federation (HBF) to highlight the benefits of buying a new-build home rather than buying from the second-hand market.

New Homes Week ran from 13 to 17 May and aimed to give house-hunters a chance to find out more about what they get when they choose to purchase a new-build home.

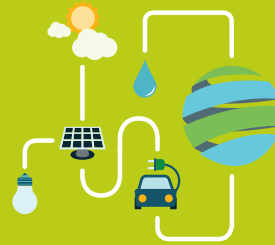
Among the features highlighted by the HBF are the superb finishing touches and quality specifications, many excellent deals on offer from house-builders, and a ten-year warranty as standard.

"The peace of mind you get when buying a new build home is unrivalled," says the HBF.

Many new homes are available with the government's hugely popular Help to Buy equity loan scheme that could be the difference between being able to afford your own home and renting for another year or more. The scheme is only available for new-build properties.

There is more information about New Homes Week on the HBF website at www.hbf.co.uk/policy/new-homes-week/





The future of housing



Around 100 local political and business leaders attended this year's Larkfleet Conference to talk about housing and economic development in the region surrounding Peterborough in an area stretching as far afield as Cambridge, Milton Keynes and Oxford.

This year's annual event focused on plans for the 'Oxford-Cambridge Arc', a government development plan which covers Peterborough. It could include one million new homes by 2050 as well as all the supporting transport, communications and economic infrastructure.

The conference was organised by The Larkfleet Group of Companies which includes developers Larkfleet Homes and Allison Homes.

Speakers included Larkfleet CEO **Karl Hick**, **Sarah Greenwood**, head of strategic growth for Homes England, and **James Palmer**, mayor of the Cambridgeshire and Peterborough Combined Authority.

There was also a presentation by **Simon Evans**, smart homes director of Larkfleet Homes, talking about developments in housing technology as the industry seeks to provide more energy-efficient homes for the future.

The event was chaired by **Lord Taylor of Goss Moor**. He told the conference:

"We should not be developing new homes that do not meet future standards. The houses we build now will still be around in 50, 100 or more years."



"We need to think about what sort of community we want in that sort of timescale. This is an amazing and exciting opportunity."

Sarah Greenwood stressed that the Cambridge-Oxford Arc was not just an opportunity to build homes but an opportunity to integrate housing and economic development.

She said: **"This is an area of enormous economic potential, but we need the right kind of houses in the right places or the economy will decline. If people cannot afford to live here, they will go elsewhere."**

"This is a once-in-a-generation opportunity to shape the future."

Mayor James Palmer stressed the need for investment in skills as well as housing and jobs. He said that garden villages, creating sustainable new communities, would be the key to delivering the ambitions for the Cambridge-Oxford Arc.

The Larkfleet Conference was held at the Great Northern Hotel in Peterborough on Thursday 13 June 2019.

D-DAY COMMEMORATION

Housebuilder Larkfleet Homes was one of the sponsors of a special showing of the film 'The longest day' in Uppingham Town Hall to commemorate D-Day.

Guests from Larkfleet, including chief executive Karl Hick and managing director Helen Hick, attended the event alongside the Lord Lieutenant of Rutland as part of Uppingham's commemoration of the D-Day landings. Helen Hick brought popcorn to share with fellow guests watching the film.



Proceeds from the film showing are being shared among a number of veterans' charities. Karl Hick said: **"The bravery of those who took part in the D-Day landings was dramatically portrayed in the film."**

"We all owe a tremendous debt of gratitude to the young men who stormed ashore at the start of the liberation of Europe 75 years ago and the men and women who supported them."

